



DISPENSER SUMPS

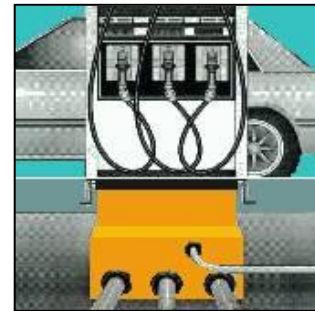
Main Features

Ambest's Dispenser Sumps are installed beneath fuel dispensers to provide access to and secondary containment of dispenser plumbing, emergency shear valves, and underground piping connections.

Main characteristics

- **Multiple Models** - Ensure a custom fit for each dispenser footprint. Available in medium and deep burial depths to properly maintain slope.
- **Structural Reinforced design** - Engineered with thick side walls to prevent sump deformation from backfill and high water table forces.
- **Wide Base:** The base widens where entry boots and pipe connections are made.
- **Integral Rain Lip** - Protrudes into the dispenser frame to prevent surface water entry.
- **Easy Installation** - Field height adjustment capability and large pipe entry area ensures installation flexibility.
- **Smooth Sealing Surfaces for Leak-Tight Sump Entry Fittings** – Uniform wall thickness and a flat, smooth finish, both inside and out provide leak-tight pipe entries.
- **Better Dispenser Mounting Frame:** One-piece painted steel construction provides strength, rigidity, and corrosion resistance.

Ambest's Stabilizer Bar Kits (SBKs) mount into strut channels in Dispenser Sumps to provide reliable support for emergency shear valves (stabilizer bars to be purchased separately)



DEEP BURIAL DISPENSER SUMPS AMB SERIES

**Model
AMB-2814
fits most
single and
duo
dispensers**



**Model
AMB-3621
fits most
cuadro
dispensers**

**Model
AMB-4721
fits most
six /
eight hose
dispensers**





Medium Burial Dispenser Sumps X Series

Ambest's Dispenser Sumps are installed beneath fuel dispensers to provide access to and secondary containment of dispenser plumbing, emergency shear valves, and underground piping connections

This medium depth dispenser sump design requires the supply piping to enter the wall of the containment sump at a high elevation. Ideal for suction piping systems requiring slope back to the tank.



Models Available:

<u>CODE No.</u>	<u>MEASURES</u>	<u>DISPENSER MODEL</u>
<input type="checkbox"/> AMB-2814PX	24 1/2" x 10 3/4" x 26"	Most Singles and Duos
<input type="checkbox"/> AMB-3621PX	30" x 16" x 26"	Most Quadros
<input type="checkbox"/> AMB-4021PX	36 1/2" x 16" x 26"	MPDs (6/8 hose) Gilbarco Encore
<input type="checkbox"/> AMB-4721PX	41 1/2" x 16" x 26"	Most MPDs (6/8hose)
<input type="checkbox"/> AMB-3215PX	28 x 10-3/4" x 26"	Quadro Wayne Vista
<input type="checkbox"/> AMB-4715PX	41 1/2" x 10-3/4" x 26"	MPDs (6/8 hose) Wayne Vista

Ambest's Stabilizer Bar Kits (SBKs) mount into strut channels in Dispenser Sumps to provide reliable support for emergency shear valves (stabilizer bars to be purchased separately)



TANK SUMPS

Main Features

Ambest Polyethylene Tank Sumps are installed below grade on top of USTs to provide access to, and secondary containment of, underground equipment such as submersible pumps and various piping connections.

Tank sumps extend from the top of the tank to just below a manhole cover at grade level, and provide a clean, dry working area to facilitate maintenance on UST equipment.

Polyethylene tank sumps are generally connected to tank bung fittings with Ambest BF-STD Tank Fitting Adapter.

Advantageous Design

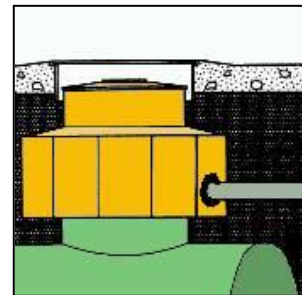
Ambest polyethylene sumps can be installed in both highwater and normal burial conditions. One-piece chamber design and a unique cover sealing system help prevent surface and ground water entry.

Polyethylene tank sumps are both fixed height and height adjustable and can be used for shallow, medium or deep tank burial applications. Include a water-resistant sump cover with gasket.

Models Available

*Ambest supplies Tank Sumps in 2 different standard models as follows: **AMB-3050-F**, **AMB-3044AR**.*

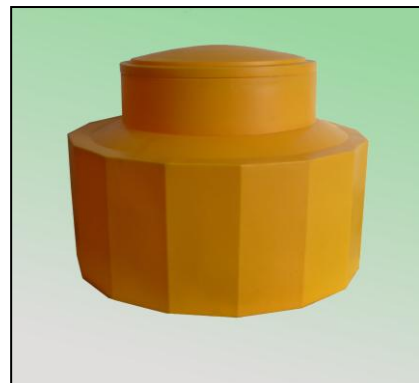
Custom made sumps, tailored to fit customer specific needs, may be available upon request.



CONTAINMENT TANK SUMPS

AMB-30 SERIES

Model AMB-3050-F
Fixed height



Model AMB-3044-AR
Adjustable height





36" Manhole With Composite Cover CDV-3612C

Ambest's FRC manhole covers are ultra lightweight. Engineered and tested to exceed the D.O.T. H20 load ratings, these covers are approximately 1/3 the weight of steel which dramatically reduces injury potential during cover removal. Available in circular shape, 36" nominal Dia.no bolt; other sizes and shapes may be supplied to fit customer's special requirements.



Highlights/Advantages

- ❑ Engineered for high-strength and fatigue resistance
- ❑ Lightweight and anti-spark construction - The FRC composite covers weigh almost 1/3 less than steel. Lighter weight reduces back injuries and increases ease of access to manhole. FRC material does not generate spark when cover is dragged over the concrete floor.
- ❑ Skirt ring - made of 5mm thick rolled iron. Polyethylene skirt- built to handle the heaviest traffic.

Ambest Composite Manhole Covers Meet Highway Specification-20 (H20): These manholes have been tested and meet the requirements of a D.O.T. H20 load rating . US Highway Specification 20 (H20) is contained in the "Standard Specifications for Highway Bridges". H20 incorporates loading of 32,000 lbs. over rear axle (4 wheel on single axle) or wheel loading of 8,000 lbs. per tire.

Size: Opening Dia. 914 mm (36"); Cover Dia. 990 mm (39"); Manhole total height 220 mm (8.7")

30"x20" Manhole with Steel or Composite Cover CDV-3020

Ambest's CDV-3020 manhole is designed for use in a wide variety of service station, commercial, and industrial driveway applications. It provides access from grade level to underground equipment including tank sumps, submersible pumps, valves, and piping connections. These manholes have a proven track record of trouble-free operation and the durable construction withstands the heaviest traffic. Ambest's CDV-3020 manhole is available in 30" Dia., with a thick polyethylene conical skirt 20" deep.



Ambest Steel Manhole Covers Meet Highway Specification-20 (H20):

These steel covers have been tested and meet the requirements of a D.O.T. H20 load rating . US Highway Specification 20 (H20) is contained in the "Standard Specifications for Highway Bridges". H20 incorporates loading of 32,000 lbs. over rear axle (4 wheel on single axle) or wheel loading of 8,000 lbs. per tire.

Materials of construction: Cover: steel or composite. Ring: carbon steel with anti-rust paint protection; Skirt: HDPE Size: Opening Dia. 640 mm; Cover Dia. 740 mm, 3/8" thick; Total height 480 mm.



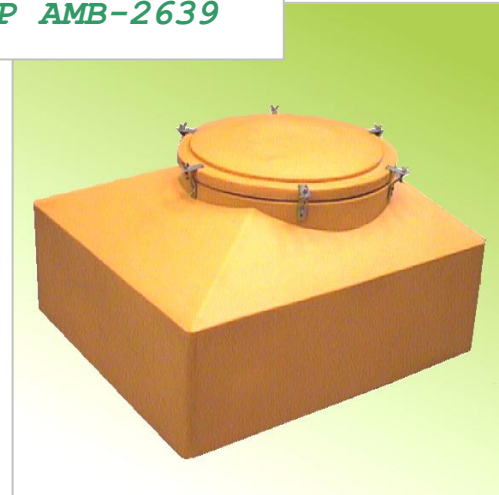
Ambest AMB-2639 and AMB-2028 tank sumps are ideally suited for low cost retrofits and shallow burial applications. The AMB-2639 is larger enough to be used as an economical tank sump. The 1000mm x 900mm base provides ample space for submersible pumps and fittings. Both the AMB-2639 and AMB-2028 are as well ideal for line branching points and for containing piping splices. The hold down fastener-gasket-lid combination fits economically under a 30" manhole AMB-3020.

The Amb-3020 Manhole features a steel cover and a 480 mm high polyethylene skirt. The manhole opening is 640 mm in Dia., ample enough to access the sump below comfortably.

MATERIALS OF CONSTRUCTION:

- Sump Body and Cover HDPE; Fasteners: galvanized steel, brass and stainless steel.
- Manhole Cover: steel 3/8" thick; Ring and Anchors: steel;
- Skirt: HDPE

MULTIPURPOSE SUMP AMB-2639



INTERMEDIATE PIPING SUMP AMB-2028

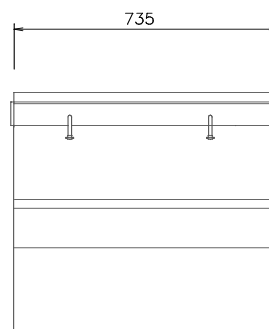
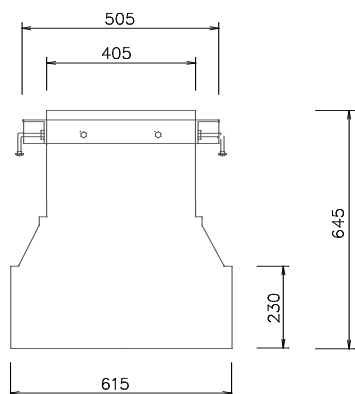


MAHOLE AMB-3020 WITH NON SKID STEEL COVER

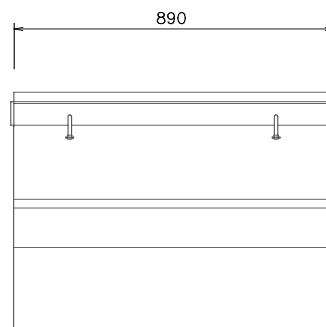
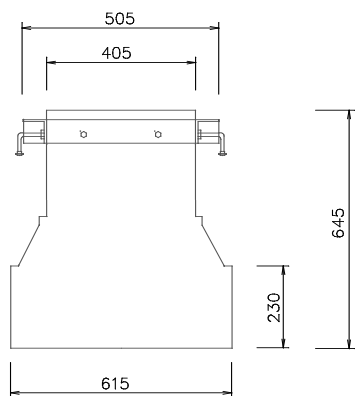




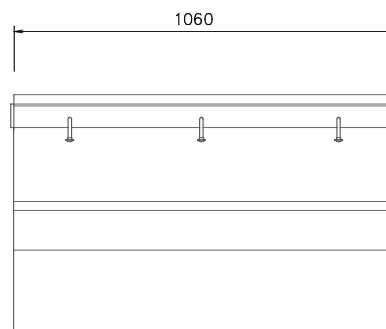
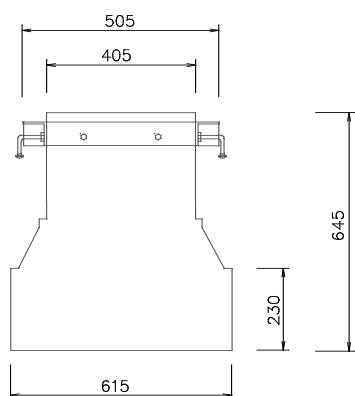
MEDIUM BURIAL DISPENSER SUMPS- X SERIES – DIMENSIONS (mm)



3621X – CONTENEDOR PARA CUADRO Y WAYNE GLOBAL



4021X – CONTENEDOR PARA GILBARCO ENCORE



4721X – CONTENEDOR PARA SEXTUPLE / OCTUPLE

Ambest S.A.



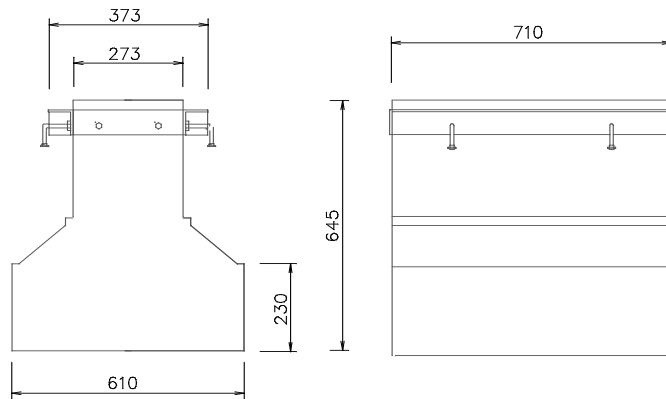
Cochabamba 4280
 1252 – Buenos Aires – Argentina
 Tel / Fax (54 11) 4925-3439

Hoja Técnica N° **SERIEX-01**

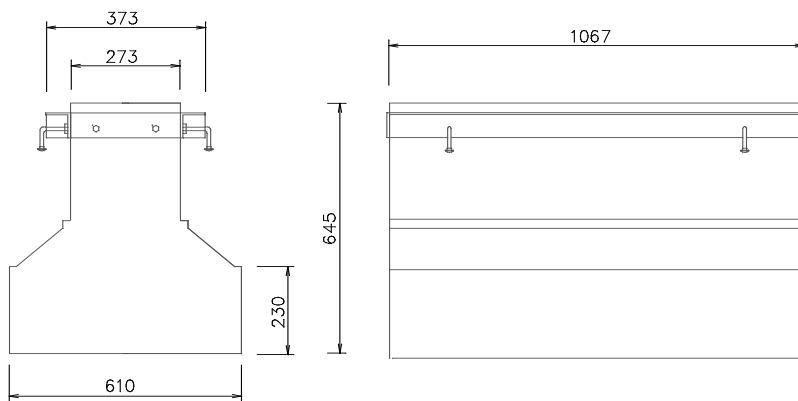
Fecha de emisión: 30/03/2011



MEDIUM BURIAL DISPENSER SUMPS- X SERIES – DIMENSIONS (mm)



3215 X – CONTENEDOR PARA CUADRO WAYNE VISTA



4715 X – CONTENEDOR PARA SEXTUPLE / OCTUPLE WAYNE VISTA

Ambest S.A.



Cochabamba 4280
 1252 – Buenos Aires – Argentina
 Tel / Fax (54 11) 4925-3439

Hoja Técnica N°

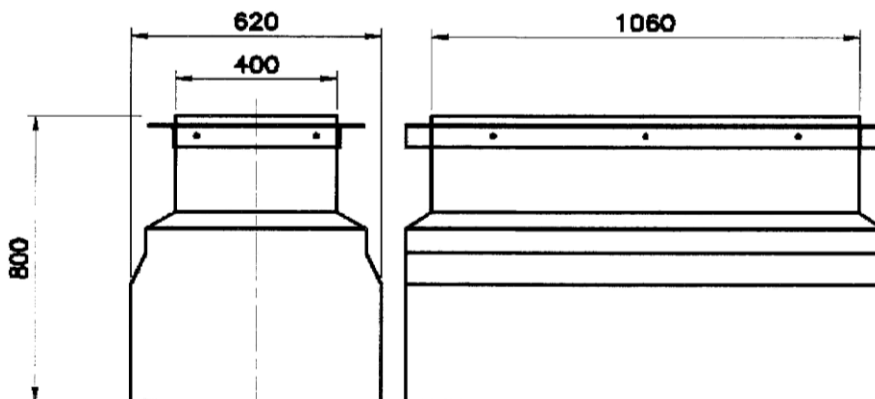
SERIE X-02

Fecha de emisión:

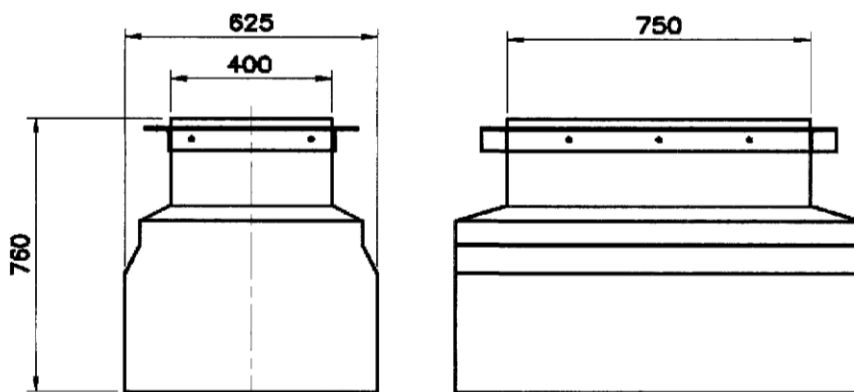
30/03/2011



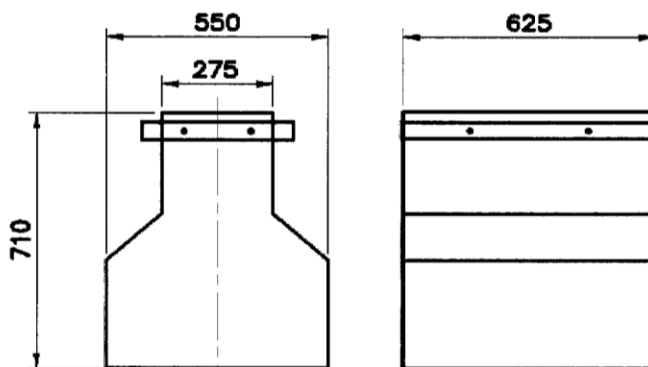
DEEP BURIAL DISPENSER SUMPS AMB SERIES (Dimensions in mm)



AMB-4721 – FITS SIX / EIGHT HOSE MODELS



AMB-3621 – FITS 4 HOSE MODELS



AMB-2814 – FITS SINGLE / DUO MODELS

Ambest S.A.



Cochabamba 4280
 1252 Buenos Aires, Argentina
 Tel/Fax: (54 11) 4925-3439

HOJA DE MATERIALES Nro:

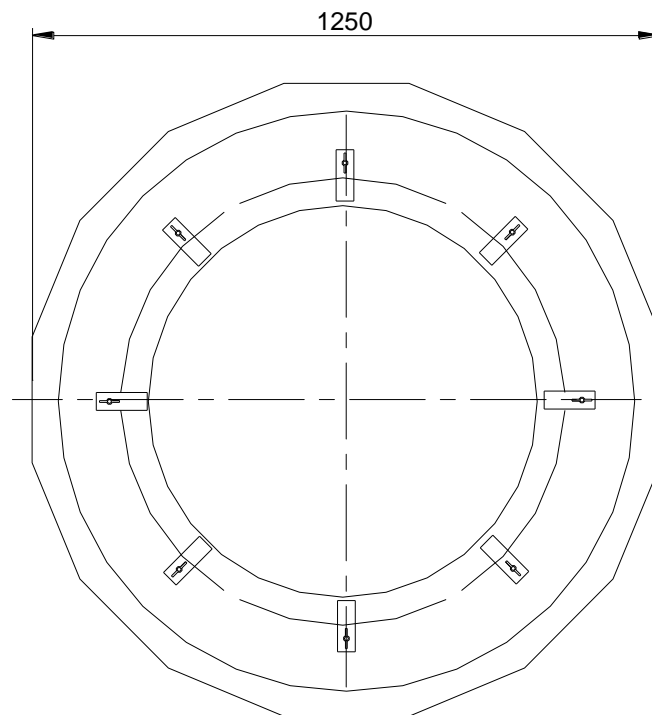
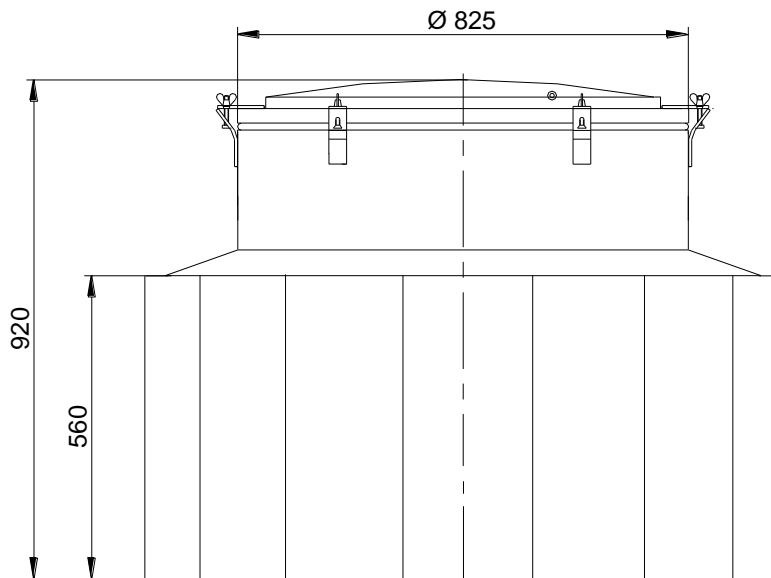
AMB-005

FECHA DE REVISION:

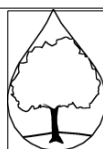
15-10-97



FIXED HEIGHT TANK SUMP – MODEL AMB-3050-AR



Ambest S.A.



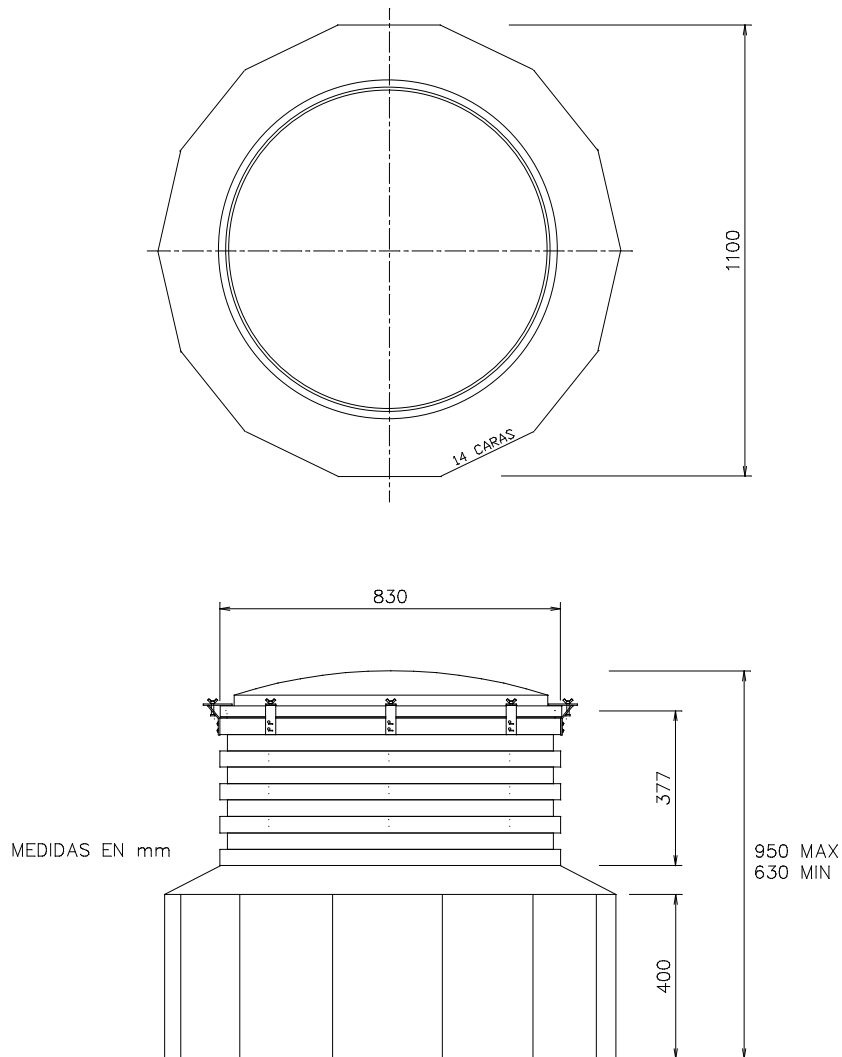
Cochabamba 4280
1252 – Buenos Aires – Argentina
Tel / Fax (54 11) 4925-3439

Hoja técnica N°
CONTENEDOR DE DERRAME AMB 3050

Fecha de emisión
19/10/2015

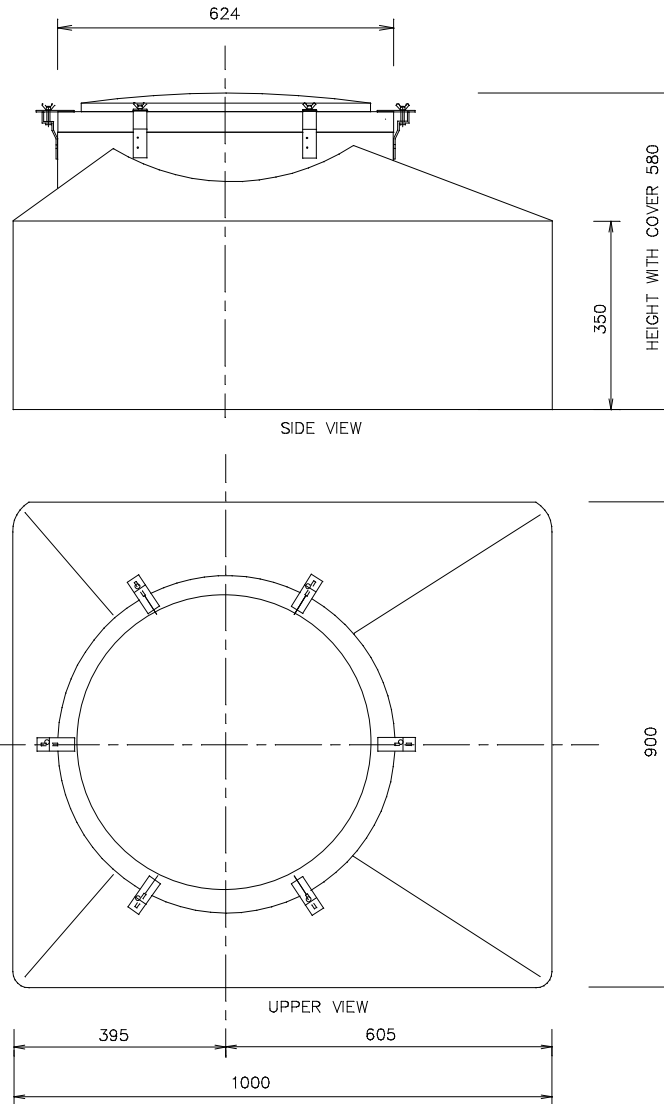


ADJUSTABLE HEIGHT TANK SUMP - MODEL AMB-3044AR





MULTIPURPOSE CONTAINMENT SUMP MODEL AMB-2639



LIST OF MATERIALS

Dimensions in mm

- 1 Polyethylene Container Sump
- 1 Water Tight Polyethylene Sump Cover
- 6 Fastener kit – See Materials Spec N 10505-000
- 1 Nitrile Rubber Seal

Ambest S.A.

Cochabamba 4280
1252 Buenos Aires, Argentina
Tel/Fax: (54 11) 4925-3439

Materials Spec Sheet Nro:

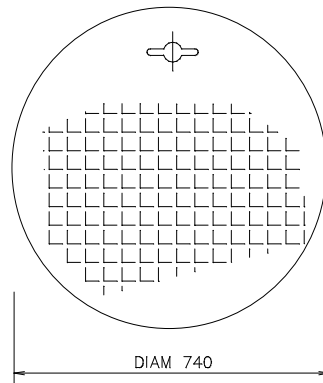
AMB-050E

Review Date:

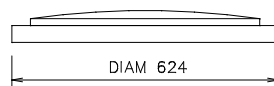
Jan 20, 2009



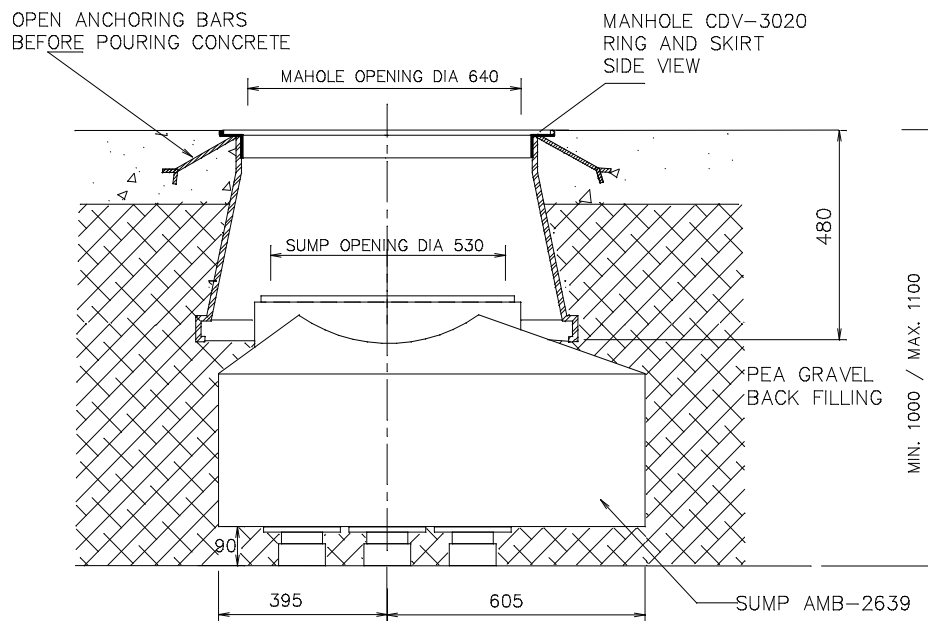
TANK SUMP AMB-2639 – INSTALLATION DETAILS



MANHOLE COVER
 UPPER VIEW
 MATERIAL: STEEL NON-SKID DIAMOND PLATE
 THICKNESS 3/8"



SUMP COVER – POLYETHYLENE
 SIDE VIEW



INSTALLATION OF AMB-2639 TANK SUMP AT MINIMUM BURIAL DEPTH
 ASSIMETRIC SIDE VIEW – Dimensions in mm

Ambest S.A.

Cochabamba 4280
 1252 Buenos Aires, Argentina
 Tel/Fax: (54 11) 4925-3439

MATERIAL SPEC SHEET No:

AMB-051E

REVIEW DATE:

20/01/2009